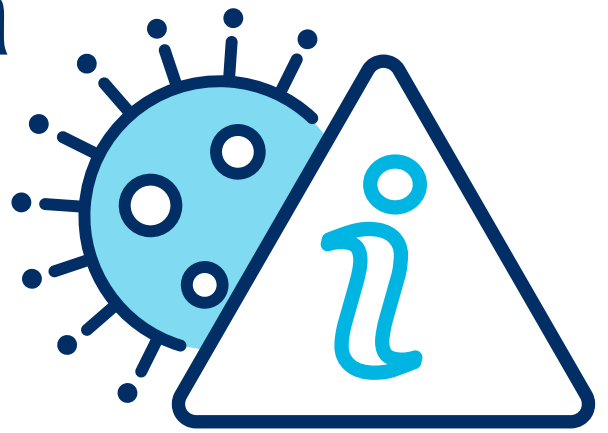


# O e mana'omia se fesoasoani tau tupe ona o le COVID-19?



E ono mafai ona e mauaina le **Totogi mo Mala Fa'afuase'i o le COVID-19** pe a fai e te le'o galue ona o fa'atonuga mo le fa'atapula'aina o gaoigaga ma le tapunia o feoa'iga.

E ono mafai ona e mauaina le **Totogi Mo Aso Malolo o le Fa'ama'i ma Mala Fa'afuase'i** pe a le mafai ona e galue ma:

- ua fa'atonuina oe e se ofisa o le soifua maloloina a le setete po'o le teritori ina ia tu'ueseaa pe fa'asaina oe, ona ua fa'amaonia sau feso'ota'iga vavalalata ma se tasi ua a'afia pe ua maua i le COVID-19
- o lo'o e va'aia se tasi ua a'afia i le COVID-19.

E ono mafai fo'i ona e agava'a mo se fesoasoani tau tupe mo se taimi umi. Fa'aaoga la matou tautua o le Totogi ma Su'e e va'ai ai mea e mafai ona e maua: [servicesaustralia.gov.au/paymentfinder](https://servicesaustralia.gov.au/paymentfinder)

Alu i le [servicesaustralia.gov.au/covid19](https://servicesaustralia.gov.au/covid19) pe fa'aaoga le numera QR lea e siaki ai pe mafai ona e maua se totogi.

